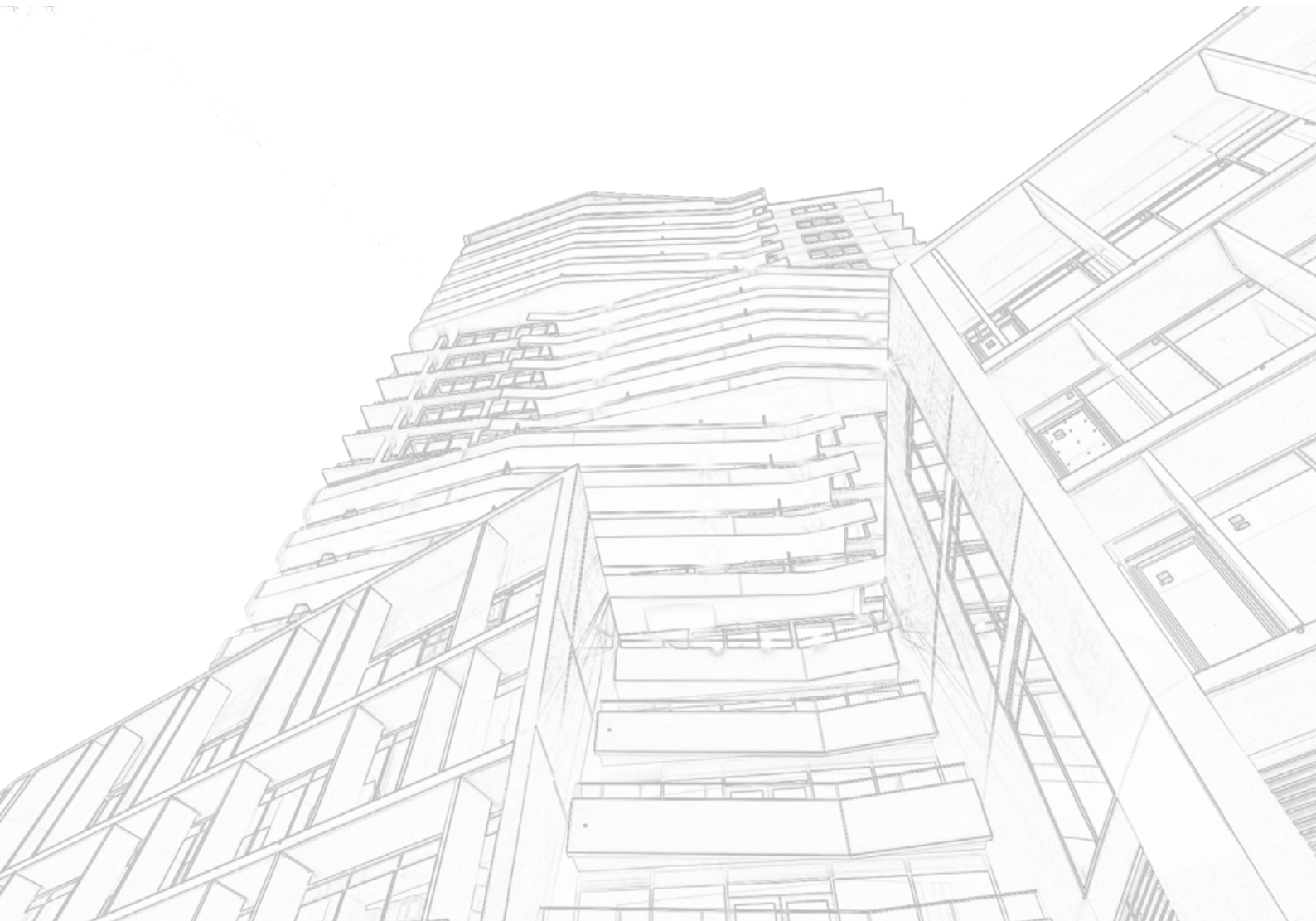




Better Wall & Flooring Solutions



walsc.com.au



Reinforced. Tested. Accredited.



Walsc AAC Panel Systems are tested and assessed for compliance with the requirements of the NCC/ Building Codes of Australia. We also continue to invest in system development and conduct necessary testings and assessments to deliver more quality assurance, in respect of fire resistance, non-combustibility, acoustic reduction, thermal insulation, weatherproofing, structural etc.

Note: Walsc AAC wall panel, also branded as Nasahi AAC Panel has been accredited CodeMark Certification (CM40331, CM40332) via CertMark in Australia.

Our Benefits



Fire Resistance



Acoustic Insulation



Thermal Insulation



Compliance Assured



Strong & Durable



Eco-friendly



Fast Construction



Technical Support



The Reinforced Walsc AAC Panel is the soul of all our Walsc AAC Panel Systems

The design versatility and flexibility of the panel and systems provide better wall and flooring solutions for home owners, developers, architects and all building consultants. Building a high quality energy efficient dream home is no longer a dream of the minority.

Residential Building Applications

- 4 *External Wall Cladding System 50*
- 5 *External Wall Cladding System 75 Light*
- 6 *Inter-tenancy Wall System 50*
- 8 *Inter-tenancy Wall System 75 Light*
- 10 *AAC Flooring System 75*

Apartment & Commercial Building Applications

- 12 *Internal Wall Systems*
- 16 *Façade Wall System*



Walsc External Wall Cladding System 50 consists of 50mm reinforced Walsc AAC Panels fixed to the structural frame of a building with battens in between to form a cavity system.

The orientation of the installed panels are either vertically aligned or horizontally staggered, which provides flexibility to builders and installers to suit their design and allow faster in installation.

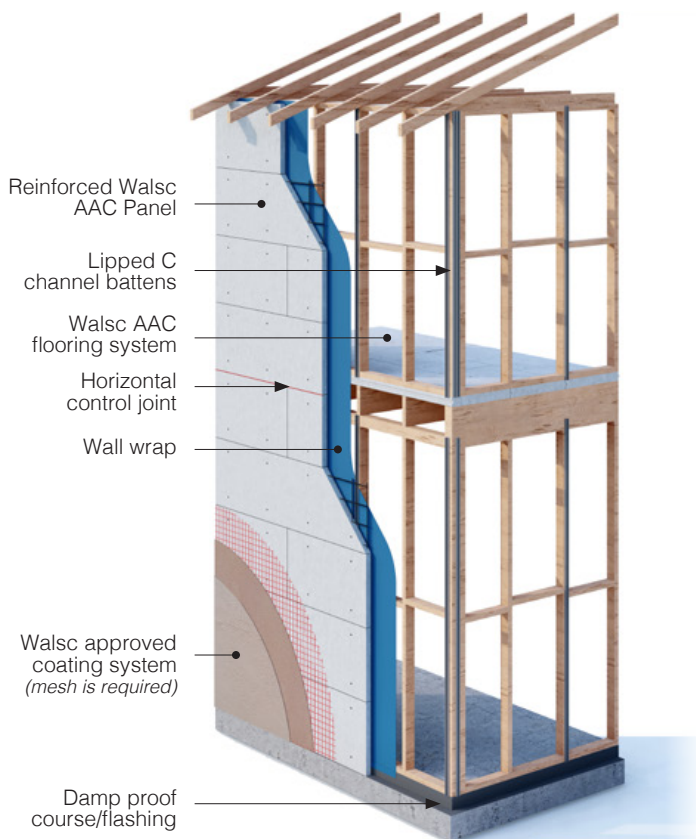
The system provides a FRL 120/120/120 fire resistance, and up to 3 times better in thermal insulation than bricks.

*E*xternal Wall Cladding System 50

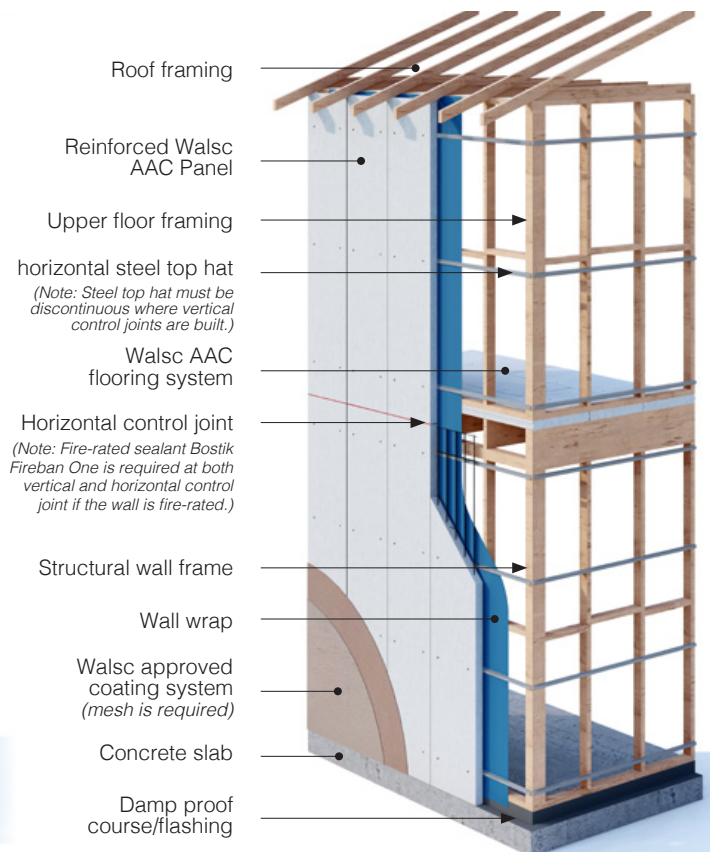
E_xternal Wall Cladding System 75 Light

The Walsc External Wall Cladding System consists of reinforced Nasahi AAC Panel 75mm Light installed vertically as shown onto continuous horizontal steel top hats which fixed to the structural frame. The system provides a FRL 240/240/180 fire resistance, and up to 4 times better in thermal insulation than bricks.

Horizontally Staggered
System Overview 50



Vertically Aligned
System Overview 50/75 Light



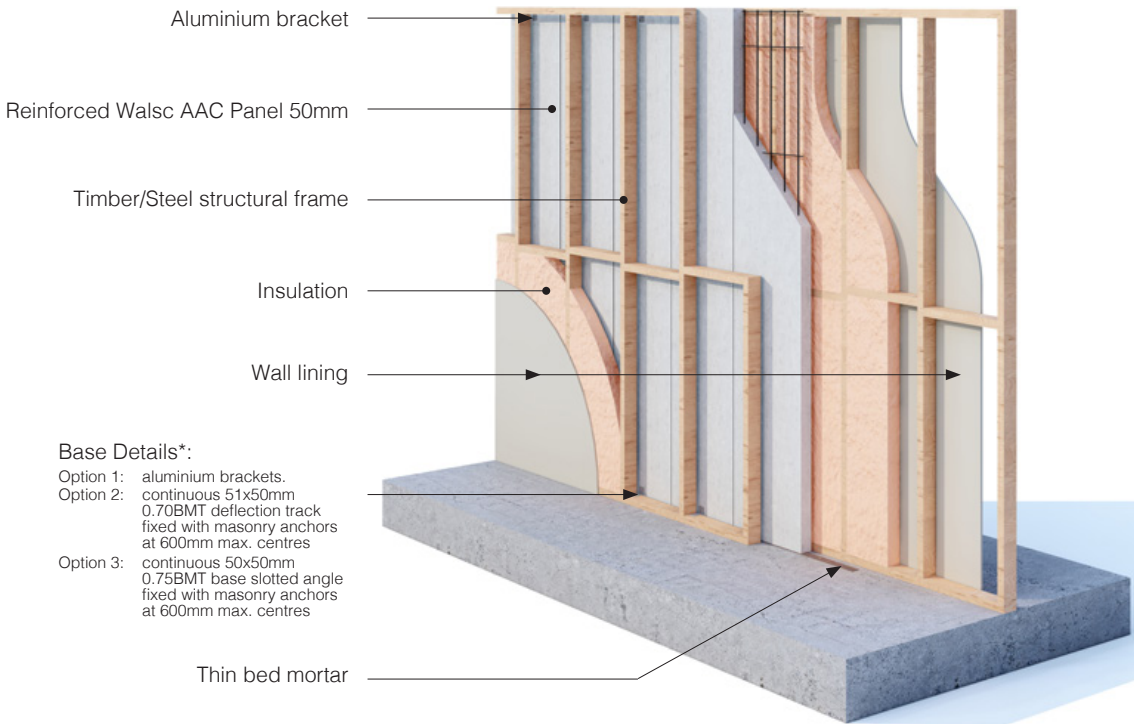
Inter-tenancy Wall System 50

Walsc Inter-tenancy Wall System 50 consists of a single leaf of 50mm reinforced Walsc AAC Panels separated by a cavity and stud frames (with insulation and plasterboard) on each side as an inter-tenancy wall in duplex and townhouse buildings. The single leaf of reinforced Walsc AAC Panels are arranged can be installed either vertically aligned or horizontally aligned.

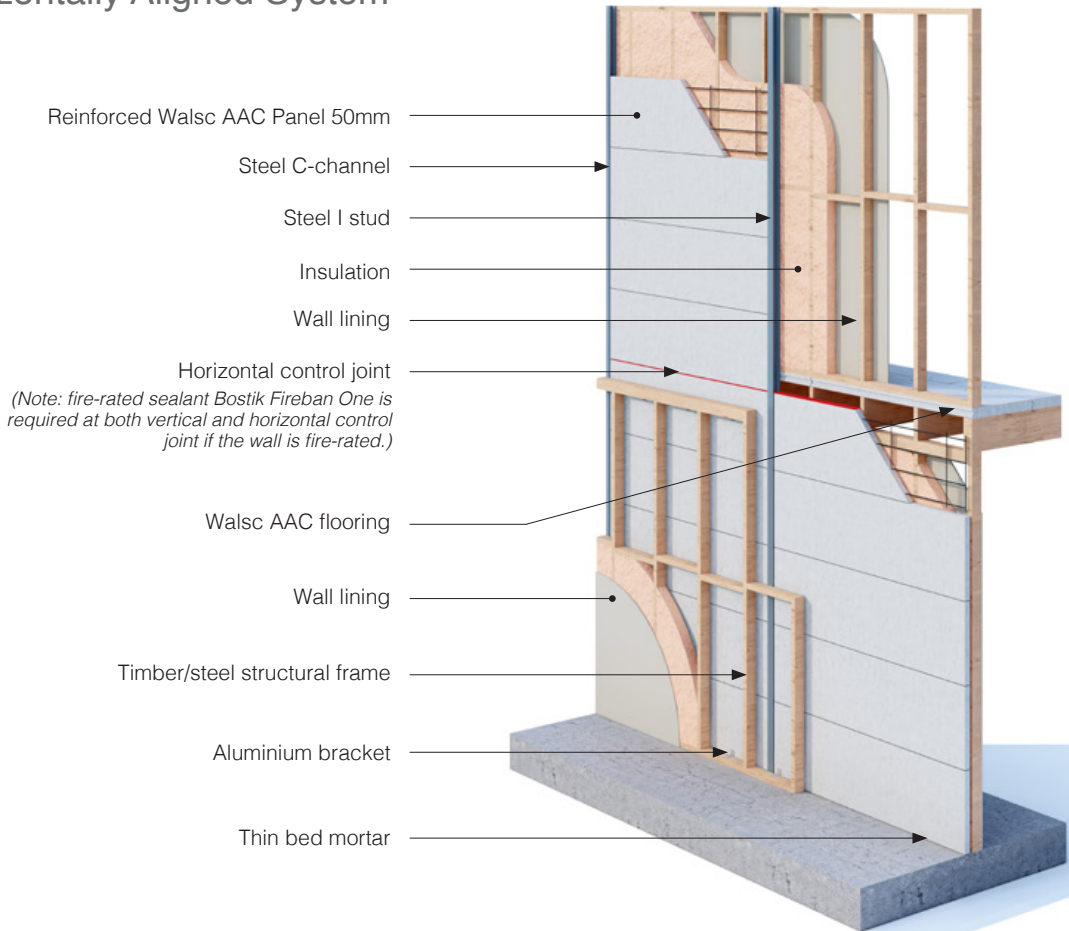
The benefits of this system include:

- Options of continues and discontinues construction
- FRL up to 120/120/120 mins
- Acoustic performance $R_w+C_{tr} \geq 50\text{dB}$
- Solid and secure party wall system
- Reliable and faster construction
- Cost effective than plasterboard shaft wall

Vertically Aligned System



Horizontally Aligned System



Inter-tenancy Wall System 75 Light

Walsc Inter-tenancy Wall System 75 Light is an alternative to our 50mm system. It provides a solid and reliable solution to separate SOUs in duplex and townhouses buildings.



Prospect, SA



Contempo, St Ives NSW



Caringbah South, NSW

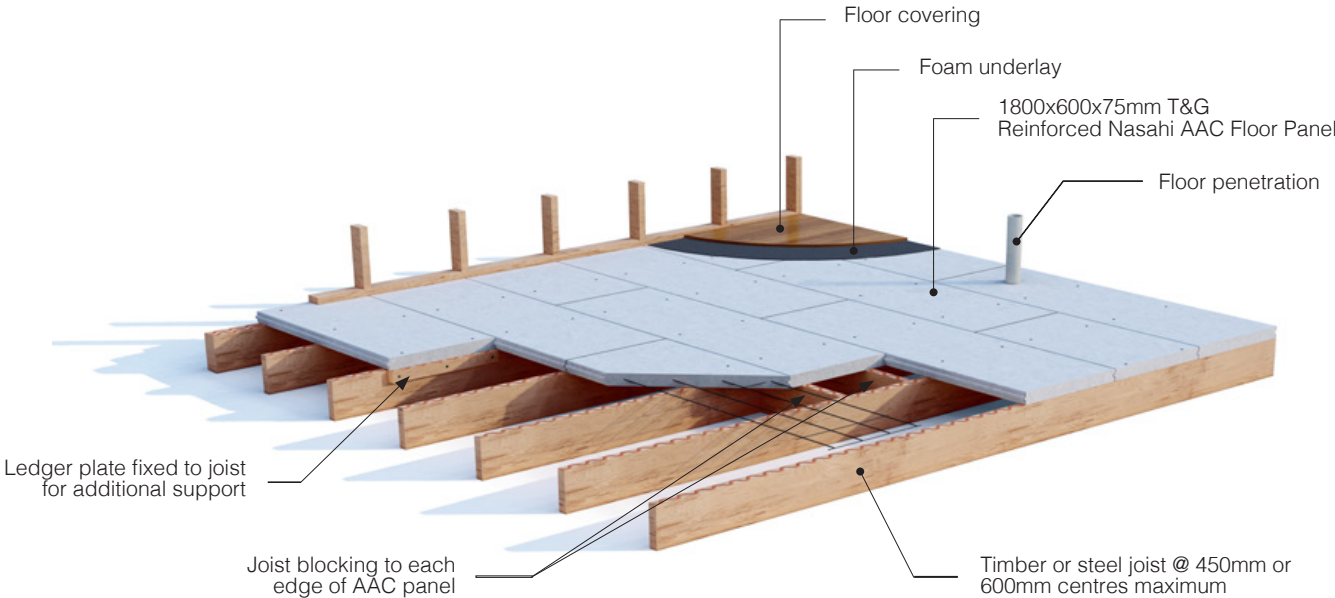
AAC Flooring System

Walsc AAC Flooring System for low-rise residential buildings consists of 1800x600x75mm T&G reinforced Nasahi AAC Floor Panels installed onto a timber or steel joist floor frame. Walsc AAC flooring system delivers unparalleled acoustic performance. It is strong & solid which makes it the excellent base for all the common covering including carpet, timber strips, and tiles.



Mount Gilead Estate, NSW

System Overview



Lilyfiled, NSW

Internal Wall Systems

Walsc has been working closely with industry partners to create multi-benefits to customers and is committed to delivering the best possible technical solutions throughout the project lifetime. Walsc Service Shaft Wall System without any plasterboard linings is tested and assessed to achieve a FRL -/120/120, when using 75mm Tongue and Groove panels.

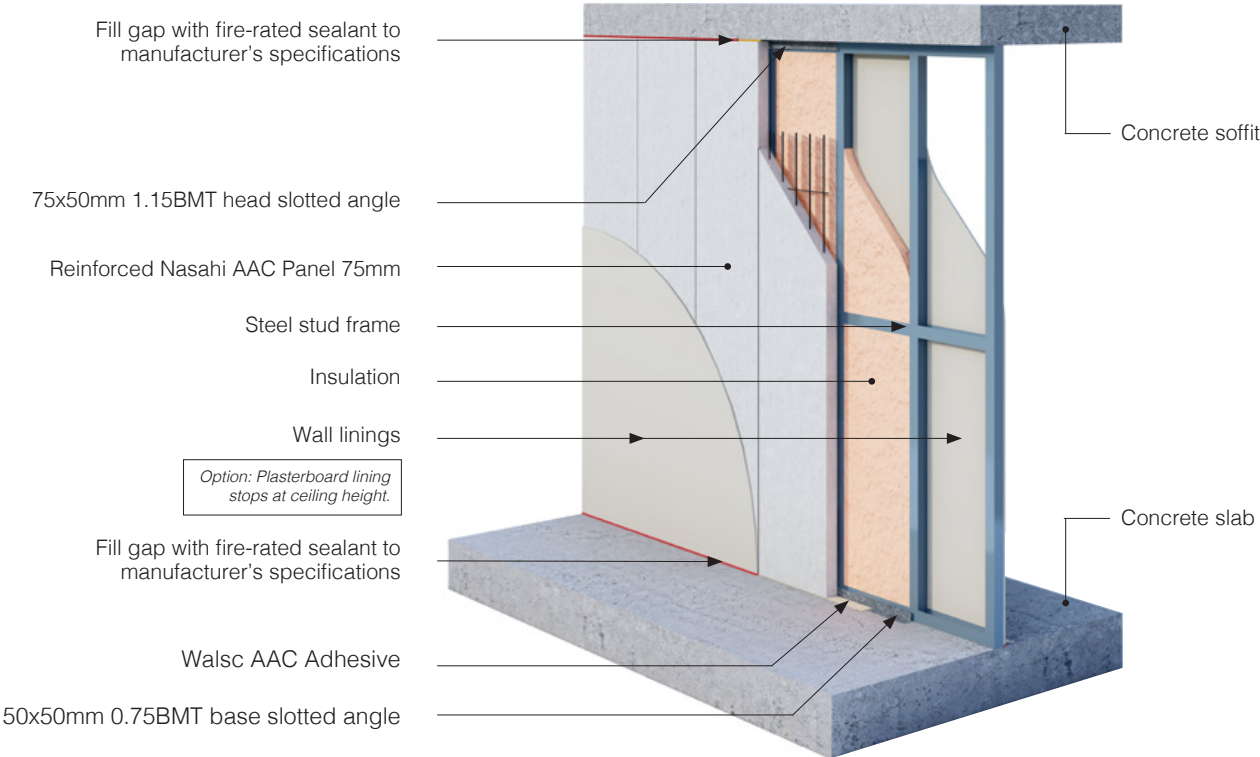
- Internal Cavity Wall
- Common Wall
- Service Shaft Wall



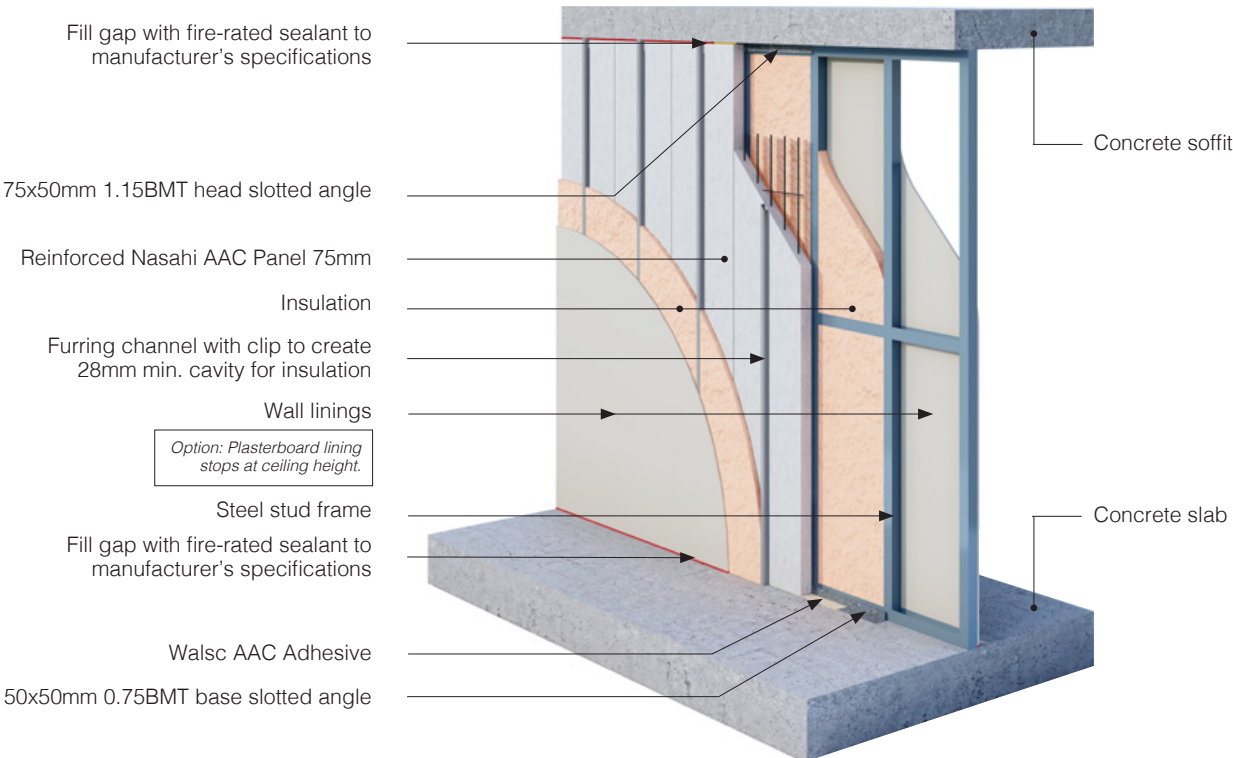
Avante, Wollongong NSW

Internal Cavity Wall

Option 1: Reinforced Nasahi AAC Panel + Separate Stud

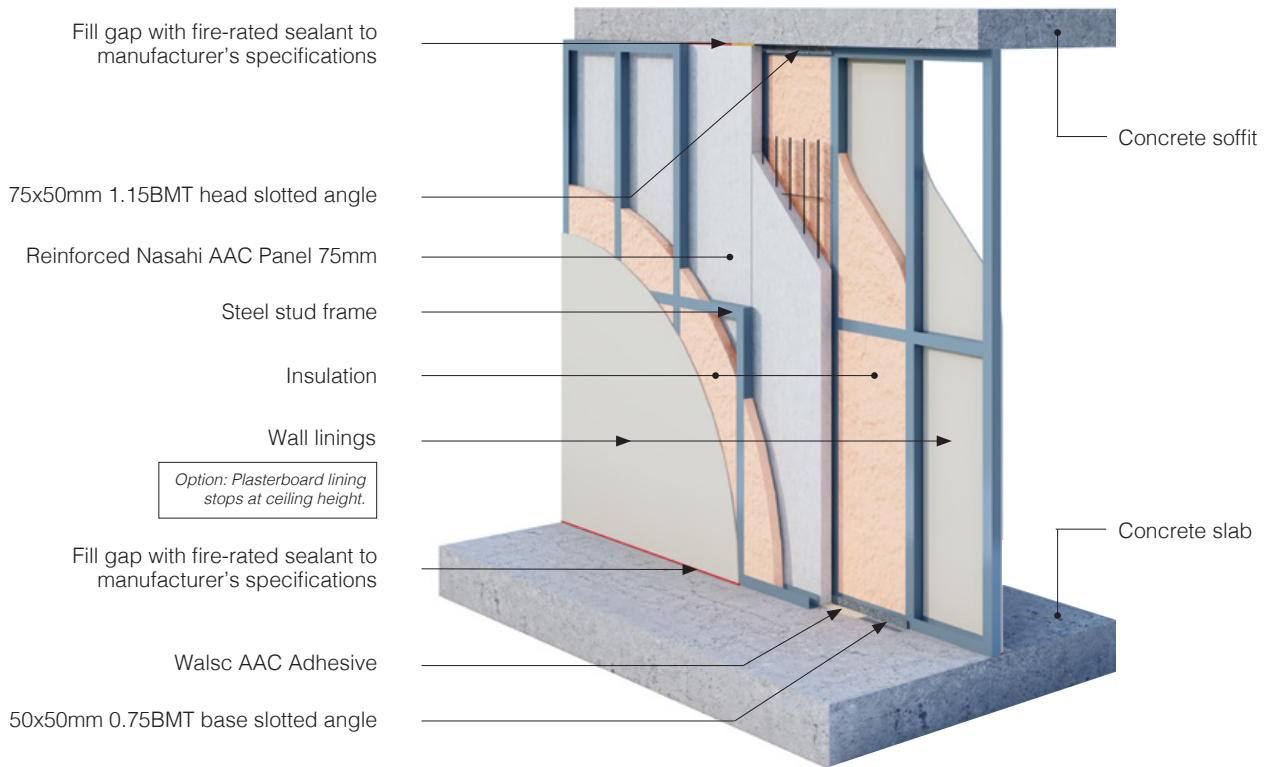


Option 2: Separate Stud + Reinforced Nasahi AAC Panel + Furring Channel



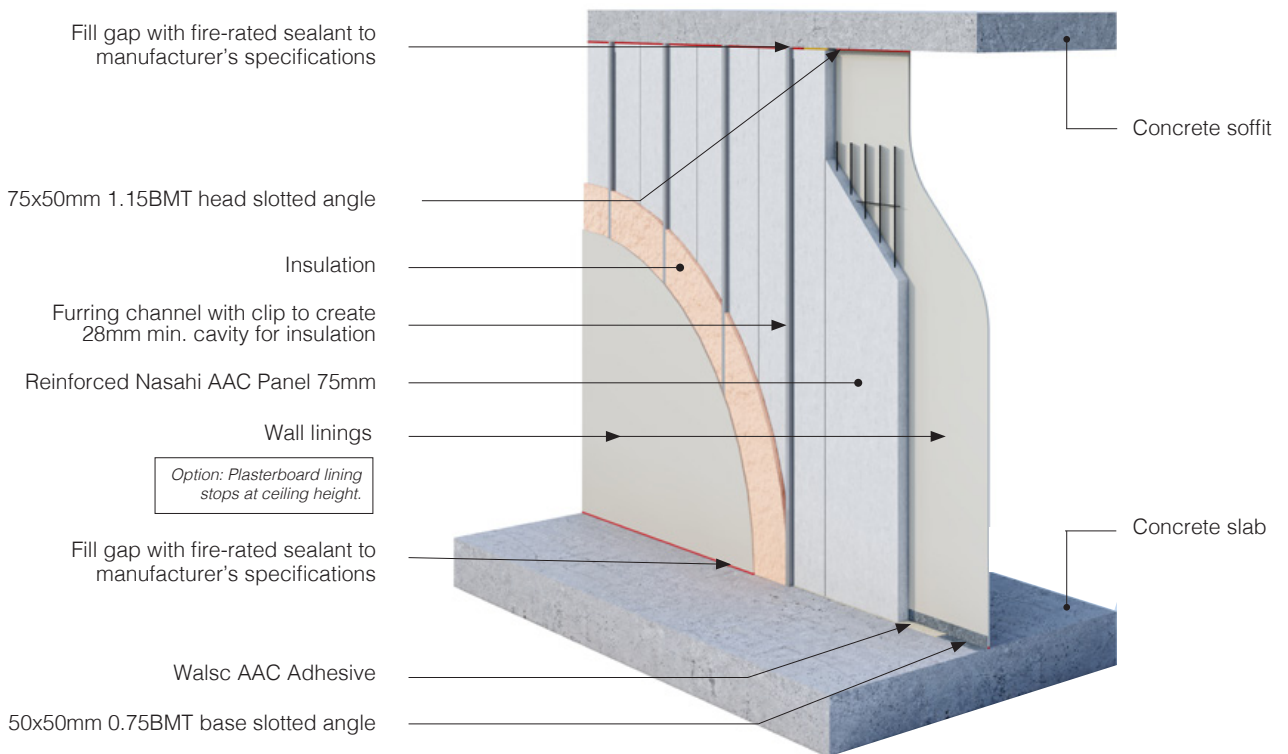
System Overview

Option 3: Separate Stud + Reinforced Nasahi AAC Panel + Separate Stud



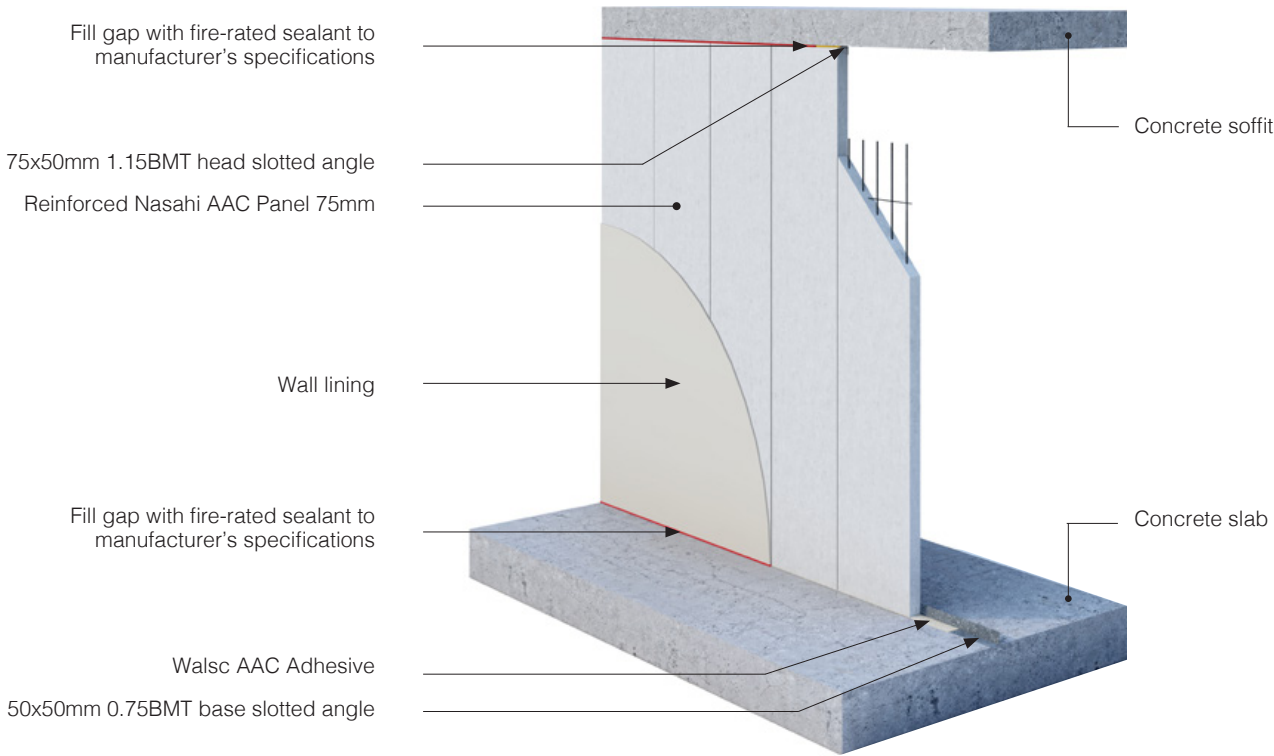
Common Wall

Reinforced Nasahi AAC Panel + Furring Channel

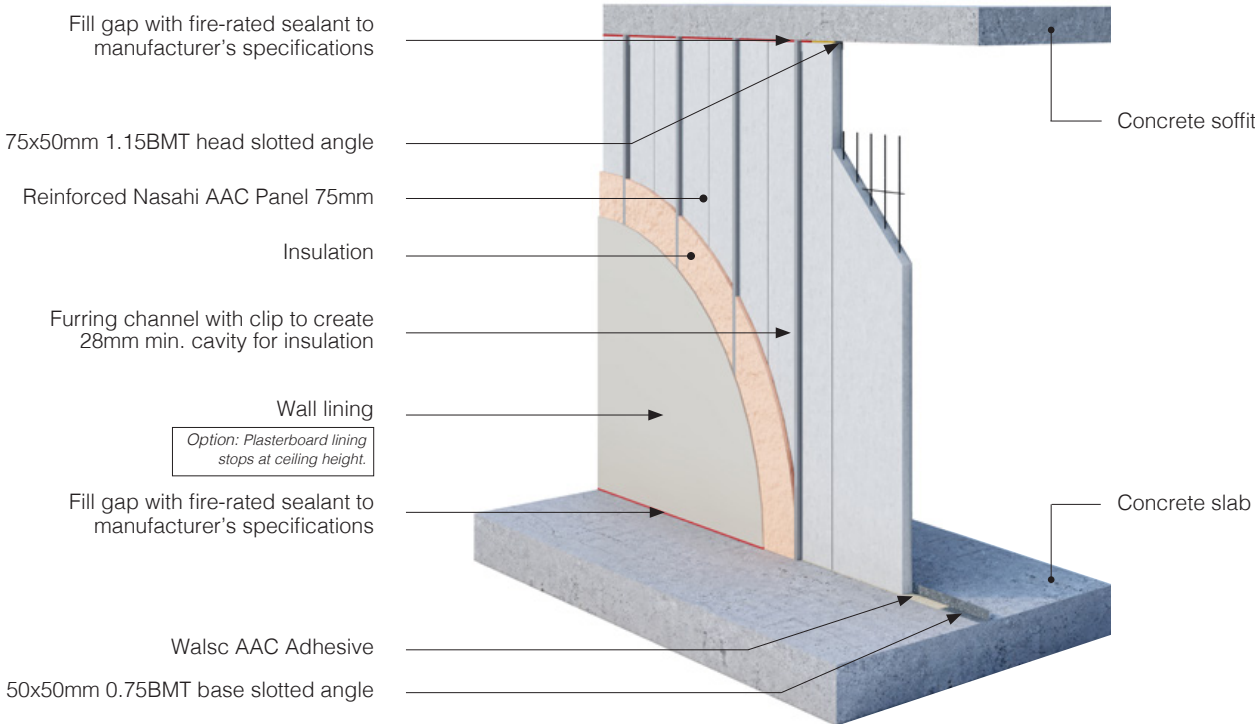


Service Shaft Wall

Option 1: Reinforced Nasahi AAC Panel



Option 2: Reinforced Nasahi AAC Panel + Furring Channel

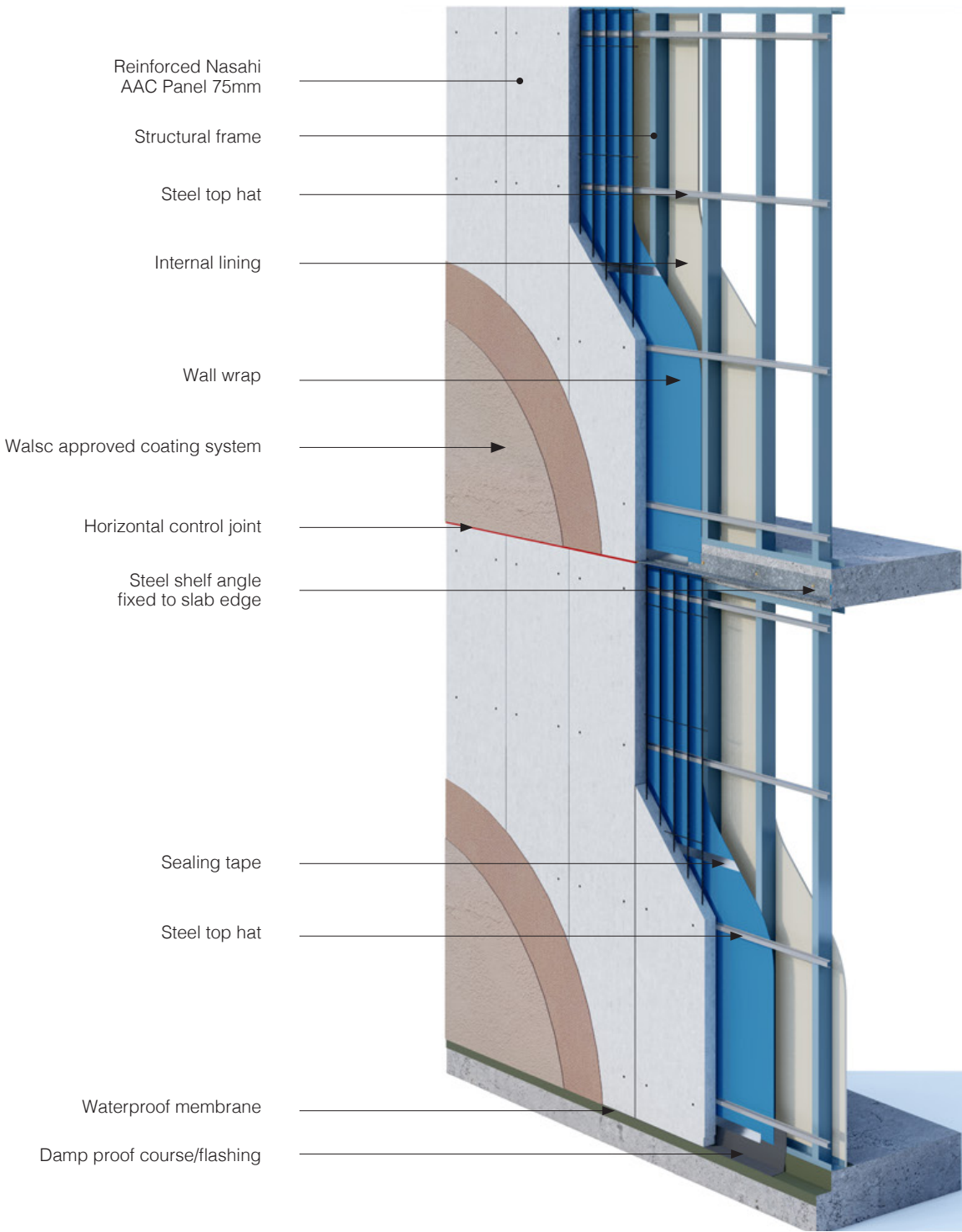


Façade Wall System

External walls of apartment and commercial buildings are required in certain circumstances to achieve a certain level of fire resistance as per Section C of NCC Volume 1. Walsc Façade Wall Systems have been tested and assessed with a FRL of -/180/180 on the rebated slab edge detail and -/120/120 on the unexposed slab edge detail.



East Pearl, Eastwood NSW



Note:
Walsc Facade Wall Systems have been assessed to comply with Part C1.9 of the 2019 NCC Volume 1. The assessment report is available upon request.



Yves Gardens, St Ives NSW



One Eastside, Penrith NSW



Edge 28, St Leonards NSW





Latitude, Liverpool NSW



One14 Tudor, Newcastle








St Charbel's Care Centre, Punchbowl NSW





Omega Apartments, Kingswood NSW

Residential Building Applications

-  External Wall Cladding System 50
-  External Wall Cladding System 75 Light
-  Inter-tenancy Wall System 50
-  Inter-tenancy Wall System 75 Light
-  AAC Flooring System 75

Apartment & Commercial Building Applications

-  Internal Wall Systems
-  Façade Wall System

Sipo Building Solutions Pty Ltd
ABN: 46 614 424 225

D3, 27 Fariola Street
Silverwater, NSW 2128
T 02 9748 2832
F 02 8246 3486

Technical Support:
1300 957 566
info@walsc.com.au
www.walsc.com.au



Disclaimer

This design guide has been carefully prepared for general guidance only and not intended to be a substitute for the exercise of professional judgment. The information presented in this guide should not be construed as legal, technique, or any other professional advice or service. It is the user's responsibility to confirm the suitability of Walsc products in particular circumstances. Since the application based on the contained information in this document may be beyond our control, neither Walsc nor any of its directors or employees should accept responsibility for loss or damage occasioned to any person acting or refraining from action as a result of inappropriate use of the information. Sipo Building Solutions Pty Ltd reserves the right to alter or update inclusive information from time to time with or without notice.