

WALSC AAC Panel Systems



Walsc AAC Panel Systems are comprised of reinforced Autoclaved Aerated Concrete (AAC). The National Construction Code (NCC) requires fire-stopping systems to be fire-tested and/or assessed to determine the FRL of the specific penetration in different walls. The Trafalgar Fire products in this technical manual have been tested and approved to AS1530.4-2014 specifically for use in Walsc AAC Panel Systems, providing compliance under the National Construction Code (NCC).



PRODUCTS



FyreBOX

FyreCOLLAR PREMIUM RETROFIT

FyreFLEX

FyrePEX_{HP}

FyrePLUG

FyreSHIELD

TWRAP

APPLICATIONS



Builders

Access Panels

Electricians

Power Cables

Data cables

PVC Conduits

HVAC&R

Insulated pipes

Plumbers

Copper and Steel pipes

PEX pipes

PEX-AL-PEX pipes

Fire Professionals

Sprinkler pipes

Fire Cables

TRADES

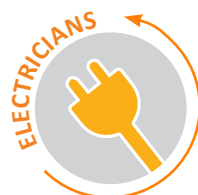


TABLE OF CONTENTS



Section	Trade/s	Page
Compliance		3
FRL Tables	Fyre Sealant Range 	4
	FyreBOX™ Slab-Mount 	5
	FyreBOX™ Maxi & Mini 	6
	FyreSHIELD™ Access Panel 	7
	FyreCHOKE Premium Hinged Retrofit 	8
	FyrePLUG Pillows 	8
Related Systems		9

WALSC AAC PANEL SYSTEMS



COMPLIANCE WITH THE NATIONAL CONSTRUCTION CODE (NCC)

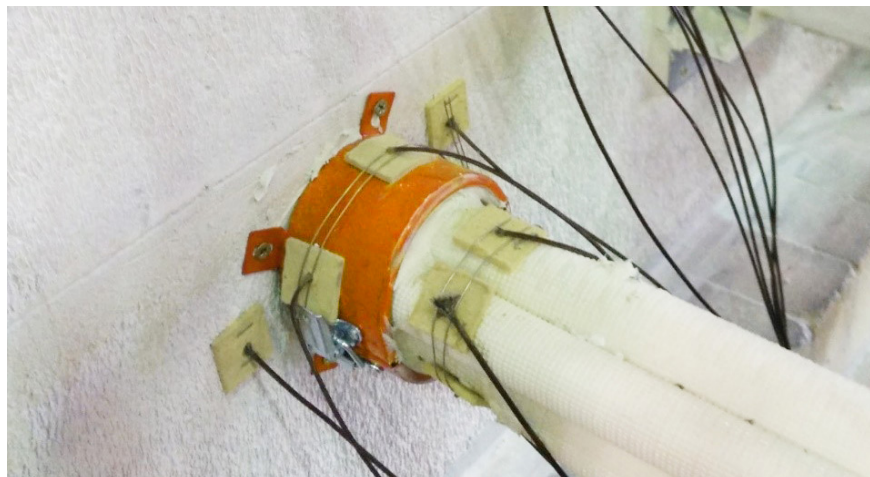
Formerly known as BCA

Walsc AAC panel systems are very popular in the Australian building industry due to the reduction in overall wall thickness, speed of construction and their acoustic and fire-resistant properties.

Trafalgar Fire is committed to innovation within the passive fire industry and as such have been developing new products and re-testing existing technologies, specifically designed to maintain the fire resistance level (FRL) of service penetrations through Walsc AAC panel systems.

Walsc AAC panel system is a proprietary panel system comprised of reinforced autoclaved aerated concrete (AAC). AS1530.4 requires walls made of AAC to be fire-tested to determine the FRL of the specific service penetration.

The Trafalgar Fire systems in this document have been fire tested and approved specifically for use in AAC wall systems, providing full compliance with the NCC. Refer to www.tfire.com.au for a full list of test reports and product technical manuals.



FYRE SEALANTS RANGE

FyreFLEX® Sealant & FyrePEX HP Intumescent Mastic Sealant



Applications		Trade	System	Details	FRL
Small Cable Bundles			FyreFLEX® Sealant	For specific system and FRL details refer to the: FyreFLEX® Technical Manual TWRAP Technical Manual	-120/120
Large Cable Bundles					-/120/120
Cable Trays					-/120/120
Steel Pipes	90min		FyreFLEX® Sealant TWRAP	Available from the Trafalgar Fire Knowledge Centre Technical Manuals page on the website.	-/90/90
Cooper Pipes	90min				-/90/90
Steel Pipes	120min				-/120/120
Cooper Pipes	120min				-/120/120
PEX Pipes			FyrePEX HP	For specific system and FRL details refer to the: FyrePEX HP Technical Manual TWRAP Technical Manual Available from the Trafalgar Fire Knowledge Centre Technical Manuals page on the website.	-/120/120
PEX-AL-PEX pipes					-/120/120
Air-conditioning bundle (FR or FE insulation)					-/120/120
Insulated Metal Pipes	up to 32mm				-/120/120
PVC Conduits					-/120/120



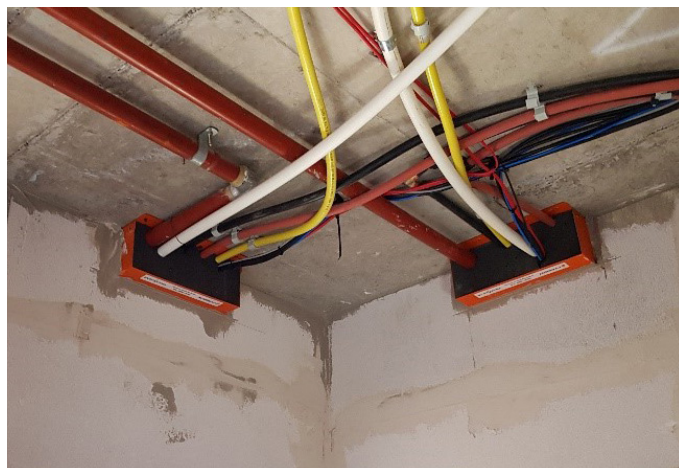
FyreBOX™ Slab-Mount

FyreBOX™ SLAB-MOUNT

APARTMENT ENTRY MIXED SERVICE PENETRATIONS



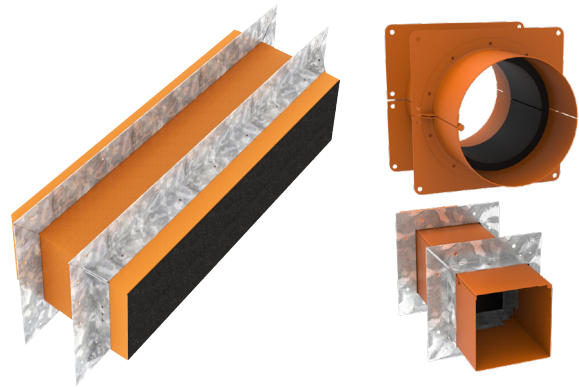
Applications	Trade	System	Details	FRL
<p>Apartments services Any quantity of typical apartment entry services:</p> <ul style="list-style-type: none"> • electrical and data • PVC conduit • PEX • gas PEX pipes • insulated pair coil • sprinkler pipes • etc. 		<p>FyreBOX™ Slab-Mount</p> <p>Available Sizes:</p> <ul style="list-style-type: none"> • 160 x 125mm • 350 x 125mm • 550 x 125mm • 650 x 125mm • Custom up to 1100 x 125mm 	<p>Installed to the slab soffit before the walls are constructed. Allows service trades to run their pipes and cables quicker/sooner, speeding up build time and reducing risk of defects on site.</p> <p>Rw50 acoustic rating.</p> <p>For specific system and FRL details refer to the: FyreBOX™ Slab-Mount Technical Manual</p> <p>Available from the Trafalgar Fire Knowledge Centre Technical Manuals page on the website.</p>	-/60/60
<p>Riser shaft services Any quantity or configuration of typical riser shaft services</p>				-/90/90
<p>2 hour wall applications Any quantity or configuration of approved services</p>				-/120/120








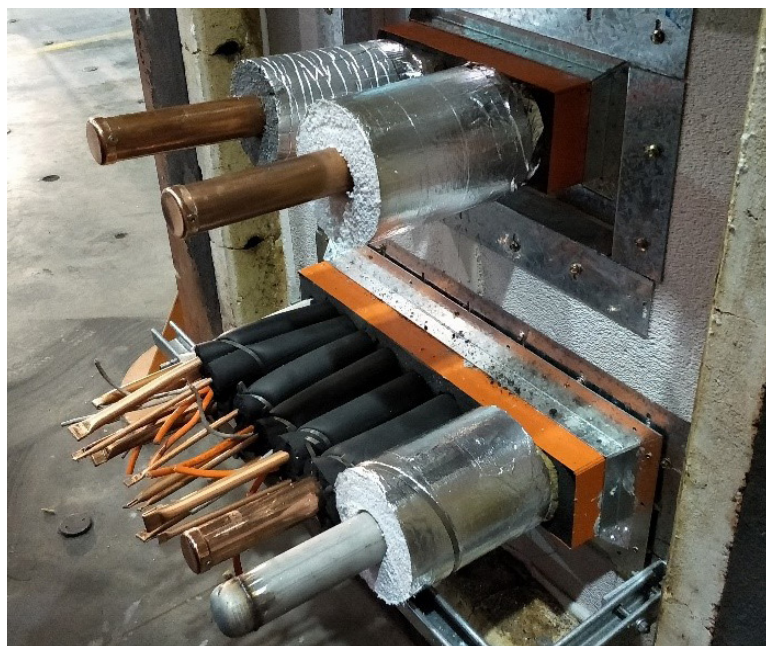
FyreBOX™ Maxi & Mini

RETRO-FIT

FyreBOX™ MAXI & FyreBOX™ MINI



Applications	Trade	System	Details	FRL
<p>Small services</p> <p>Any including:</p> <ul style="list-style-type: none"> electrical and data PVC conduit PEX gas PEX pipes insulated pair coil 	   	<p>FyreBOX™ Mini</p> <p>Square sizes:</p> <ul style="list-style-type: none"> 65mm 100mm <p>Round sizes:</p> <ul style="list-style-type: none"> 100mm 150mm 	<p>Mounted anywhere in the wall with steel mounting flanges (FyreFLANGE), hinged for easy retrofit.</p> <p>For specific system and FRL details refer to the:</p> <p>FyreBOX™ Maxi and Mini Technical Manual</p>	-/120/120
<p>Large services</p> <p>Any including large quantities of:</p> <ul style="list-style-type: none"> insulated/bare copper steel metal pipes cable trays conduits 		<p>FyreBOX™ Maxi</p> <p>Available Sizes:</p> <ul style="list-style-type: none"> 350 x 125mm 550 x 125mm 650 x 125mm 750 x 125mm 1100 x 125mm 	<p>Available from the Trafalgar Fire Knowledge Centre Technical Manuals page on the website.</p>	-/120/120



FyreSHIELD™

2 WAY TESTED FIRE RATED ACCESS PANEL



Applications	Trade	System	Details	FRL*
Access Panels	   	<p>FyreSHIELD™</p> <p>Sizes:</p> <ul style="list-style-type: none"> • 300 x 300mm • 400 x 400mm • 450 x 450mm • 550 x 550mm • 600 x 600mm • Custom any size up to 600 x 600mm 	<p>For specific system and FRL details refer to the:</p> <p>FyreSHIELD™ Technical Manual</p> <p>Available from the Trafalgar Fire Knowledge Centre Technical Manuals page on the website</p>	<p>-/60/60</p> <p>or</p> <p>-/90/30</p>

* Shaft walls only require 30 minutes insulation as per NCC C3.13

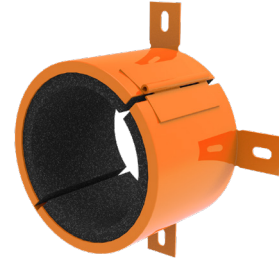


FyreSHIELD

Fully Insulated
2-Way Fire Protection

* Patent Pending

FyreCHOKE PREMIUM HINGED RETROFIT FIRE COLLARS

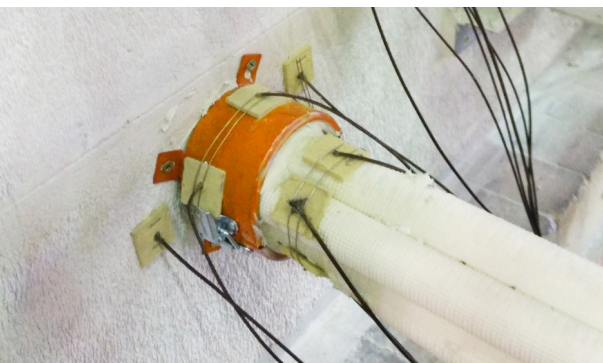


Applications	Trade	System	Details	FRL
PVC Conduits		FyreCHOKE Premium Hinged Retrofit	For specific system and FRL details refer to the: FyreCHOKE Technical Manual Available from the Trafalgar Fire Knowledge Centre Technical Manuals page on the website	-120/120
PVC Pipes				-/120/120
PEX pipes				-/120/120
PEX-AL-PEX pipes				-/120/120
Air-conditioning bundle (FR or FE insulation)				-/120/120

FyrePLUG® FIRE PILLOWS



Applications	Trade	System	Details	FRL
Electrical and Data Cables		FyrePLUG Pillows	For specific system and FRL details refer to the: FyrePLUG Technical Manual Available from the Trafalgar Fire Knowledge Centre Technical Manuals page on the website	-120/120
PVC Conduit				-/120/120
Metal pipes				-/120/120



RELATED SYSTEMS

FyreBOX MINI



FyreBOX MAXI



FyreBOX SLAB-MOUNT



FyreFLEX



FyrePEX HP



FyrePLUG



FyreSHIELD



TWRAP



Fyre COLLAR PREMIUM RETROFIT

